

**TRISAGION SUBSTITUTION FOR THE NATIVITY OF CHRIST,
THEOPHANY, LAZARUS SATURDAY, PASCHA, AND PENTECOST
ΟΣΟΙ ΕΙΣ ΧΡΙΣΤΟΝ – AS MANY OF YOU AS HAVE BEEN BAPTIZED**

Ἦχος Α' - First Tone

N. Takis

Moderato

A - μήν. Ὁ-σοι εἰς Χρι - στόν ε - βα - πτί-σθη - τε, Χρι-
A - min. O-si is Chri - ston e - va - pti-sthi - te, Chri-

- στόν ε - νε - δύ - σα - σθε. Ἀλ - λη - λού - ι - α. As ma - ny of
- ston e - ne - dhi - sa - sthe. Al - li - lou - i - a.

you as have been bap - tized in - to Christ have put on Christ. Al - le -

- lu - i - a. Ὁ-σοι εἰς Χρι - στόν ε - βα - πτί-σθη - τε, Χρι-
O-si is Chri - ston e - va - pti-sthi - te, Chri-

- στόν ε - νε - δύ - σα - σθε. Ἀλ - λη - λού - ι - α.
- ston e - ne - dhi - sa - sthe. Al - li - lou - i - a.

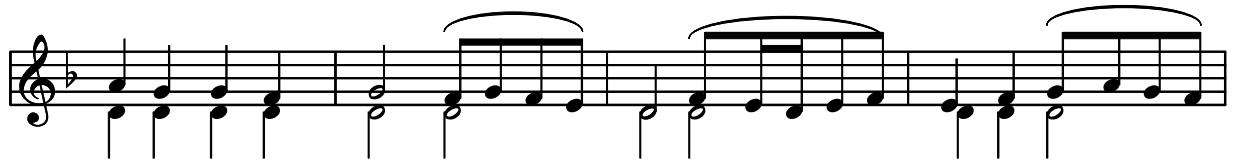
Glory to the Father and to the Son and to the Ho - ly Spi - rit, both



now and forever and unto the ages of a - ges. A - men. Ye have put on



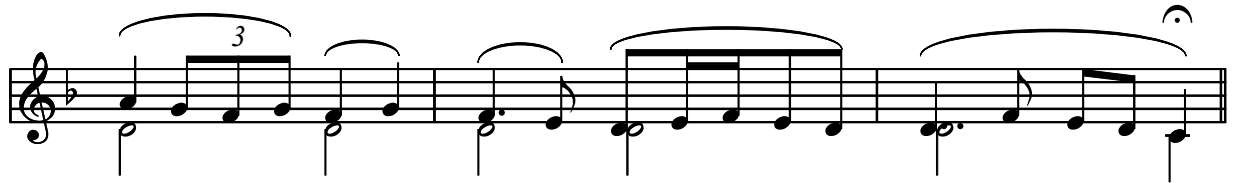
Christ. Al - le - lu - i - a. *f* Ναι, δύ - να - μις.
Ne, di - na - mis.



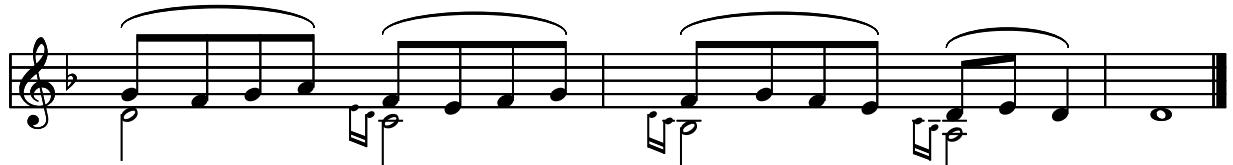
Ὅ - σοι εἰς Χρι - στόν ε - βα - πτί - ε - βα - πτί -
O - si is Chri - ston e - va - pti - e - va - pti -



- σθη - τε, Χρι - στόν
- sthi - te, Chri - ston



ε - νε - δύ - σα - σθε.
e - ne - dhi - sa - sthe.



Αλ - λη - λού - ι - α.
Al - li - lou - i - a.