

**KONTAKION OF THE NATIVITY OF CHRIST**  
**Η ΠΑΡΘΕΝΟΣ ΣΗΜΕΡΟΝ ΤΟΝ ΥΠΕΡΟΥΣΙΟΝ ΤΙΚΤΕΙ**

December 25 to 31

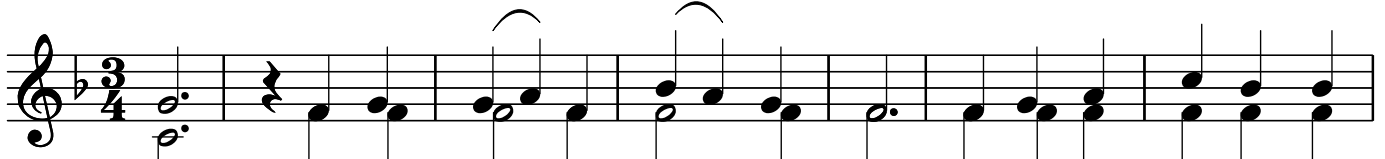
Ἦχος γ'

Model Melody

**Moderato**



Η Παρ - θέ - νος σή - με - ρον τον υ - πε - ρού - σι - ον τί -  
I Par - the - nos si - me - ron ton i - pe - ru - si - on ti -



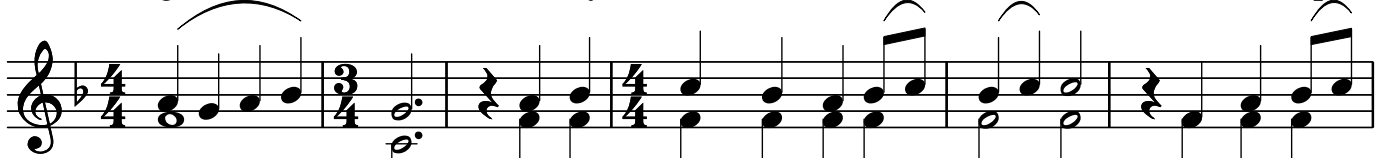
- κτει και η γη το σπή - λαι - ον τω α - προ - σί - τω προ -  
- kti kai i yi to spi - le - on to a - po - si - to pro -



- σά - γει. Ἄγ - γε - λοι με - τά ποι - μέ - νων δο - ξο - λο -  
- sa - yi. An - ge - li me - ta pi - me - non dho - xo - lo -



- γού - σι, Μά - γοι δε με - τά α - στέ - ρος ο - δοι - πο -  
- ghu - si, Ma - yi dhe me - ta a - ste - ros o - dhi - po -



- ρού - σιν. Δι' η - μάς γαρ ε - γεν - νή - θη παι - δί - ον  
- ru - sin. Di i - mas ghar e - yen - ni - thi pe - dhi - on



νέ - ον ο προ αι - ώ - νων Θε - ός.  
ne - on o pro e - o - non The - os.

**KONTAKION OF THE NATIVITY OF CHRIST  
ON THIS DAY THE VIRGIN BEARS HIM WHO SURPASSES ALL ESSENCE**

December 25 to 31

Third Tone

N. Takis

**Moderato**



On this day the Vir-gin bears Him who sur - pas-ses all  
es - sence, and the earth holds forth a cave  
to One be - yond our ap - proa - ching! An-gels sing  
a-long with shep - herds prai-sing his glo - ry.  
Wise men come; led by a star, they jour-ney to find  
him who for us is now brought forth as a new-born  
ba - by, yet he is God be - fore time.