

TA KALANDA

SATB a cappella Concert Version

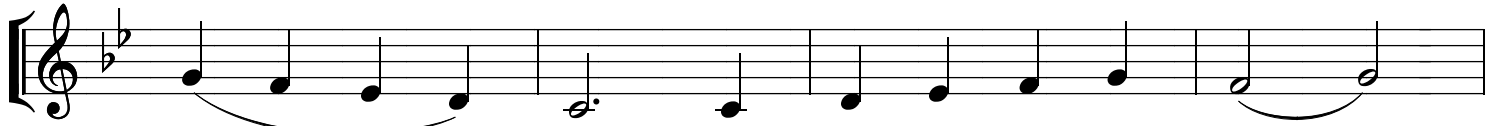
Joyfully $\text{♩} = 90$

N. Takis

Sopranos only



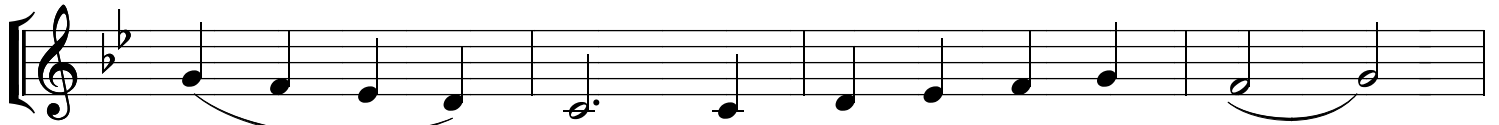
mf We bid good eve - ning gen - tle folk.



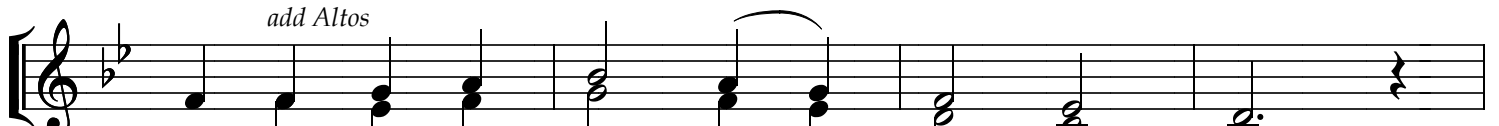
Would you, would you de - sire to hear



told of Christ's Na - tiv - i - ty div - ine?

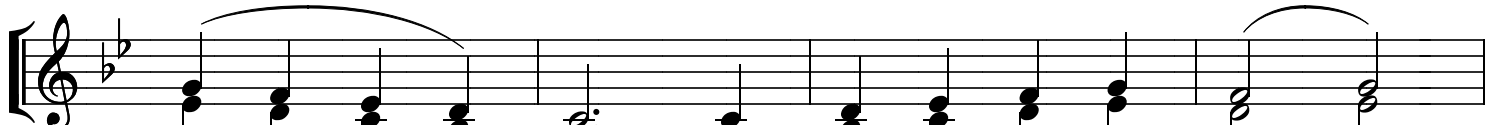


We'll sing, we'll sing it to your house -

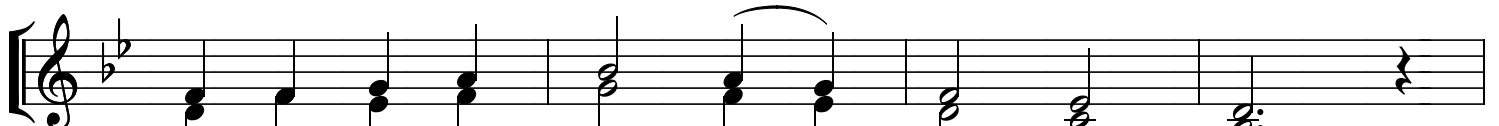


hold. For Christ is born in Beth - le - hem.

add Altos



Sing out, sing out in ju - bi - la -

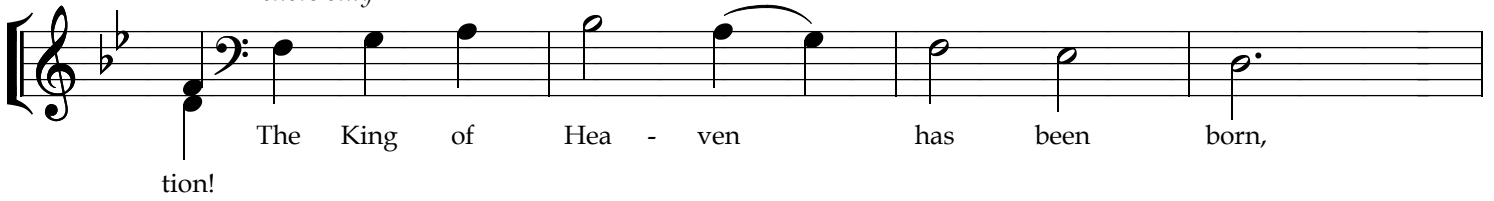


tion! The heav - ens break forth in - to joy.



Re - joice, re - joice all of cre - a -

Tenors only

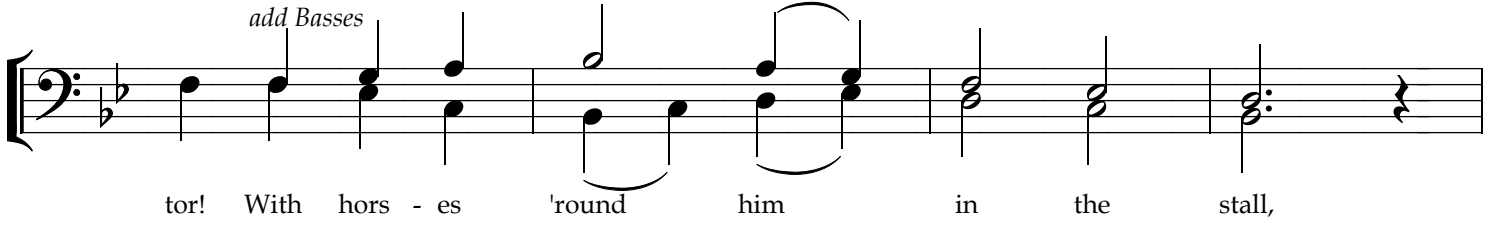


The King of Heaven has been born,
tion!

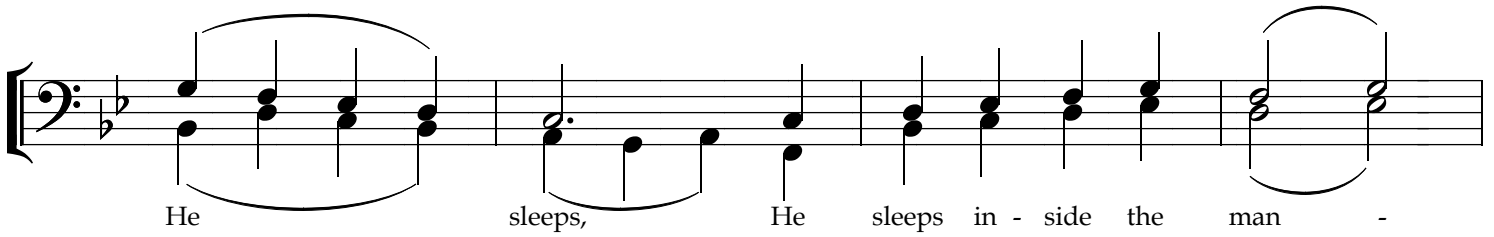


Who is, Who is the world's Cre - a -

add Basses

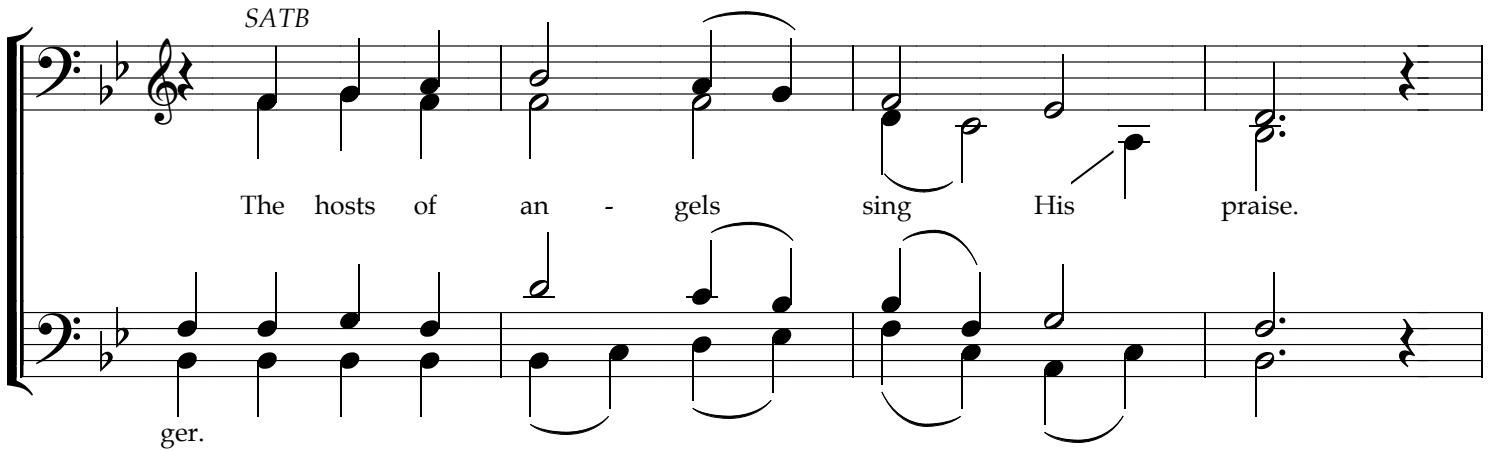


tor! With hors - es 'round him in the stall,



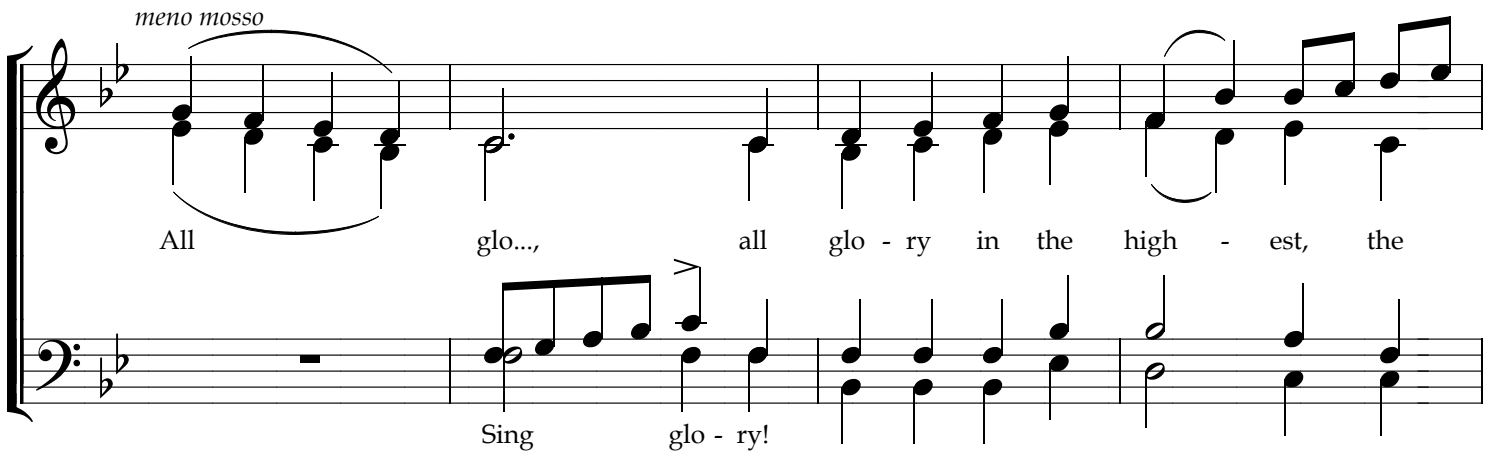
He sleeps, He sleeps in - side the man -

SATB



The hosts of an - gels sing His praise.
ger.

meno mosso



All glo..., all glo - ry in the high - est, the
Sing glo - ry!

In 4 ♩ = 135

f high - est! *mf* The faith - ful shep - herds at His

side draw near, draw near to be the

meno mosso first blest. From out of Per - sia Ma - gi

come. With gifts, with gifts they will a -

With

Score for the first system. The vocal line (treble clef) begins with a half note 'dore' followed by a long melisma 'Him(m)'. The piano accompaniment (bass clef) starts with a half note 'dore' and then provides a rhythmic accompaniment for the lyrics 'O come let us a - dore' with a forte (*f*) dynamic.

Score for the second system. The vocal line (treble clef) continues with the lyrics 'Led by the bright - ness of a star,'. The piano accompaniment (bass clef) provides accompaniment for the lyrics 'Him!' and 'mp' dynamic markings.

Score for the third system. The vocal line (treble clef) features 'Kings!' and 'Three Kings who bow be - fore'. The piano accompaniment (bass clef) includes 'Kings!' and 'Altos & Tenors: Three' parts. Dynamics include *f* and *meno mosso*.

Score for the fourth system. The vocal line (treble clef) includes 'Him(m)', 'Glo - ri - fy Him!', and 'rit.'. The piano accompaniment (bass clef) includes 'Tenors: Christ is born!' and 'fp' dynamic markings.