

# KONTAKION OF THEOPHANY (ΕΠΙΦΑΝΙΑ)

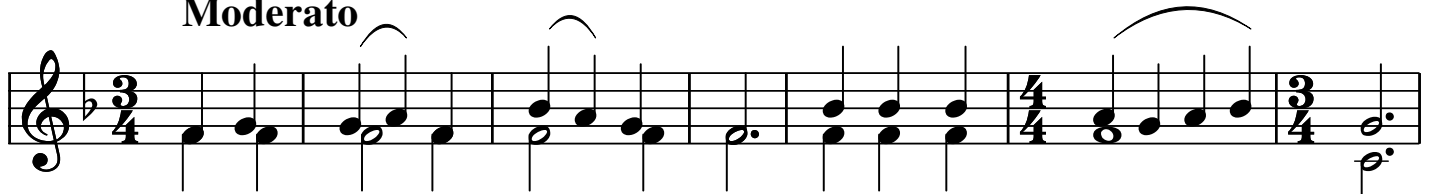
## ΕΠΕΦΑΝΗΣ ΣΗΜΕΡΟΝ

January 6 to 14

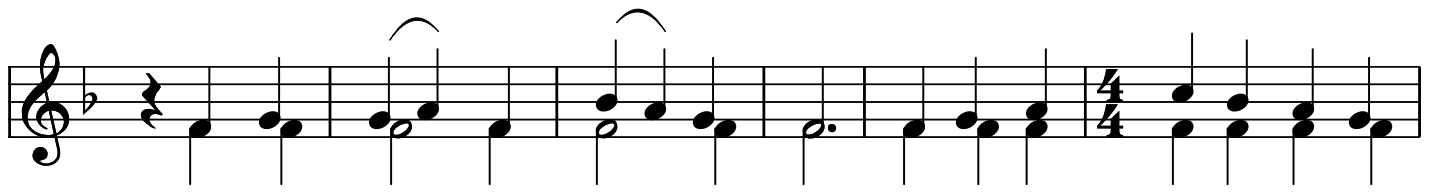
Ἦχος δ' (after Ἦχος γ')

Model Melody

**Moderato**



Ε-πε - φά - νης σή - με - ρον τη οι-κου - μέ - νη  
E-pe - fa - nis si - me - ron ti i - kou - me - ni



και το φως σου, Κύ - ρι - ε, ε-ση-μει - ώ-θη εφ' η-  
ke to fos sou, Ky - ri - e, e - si - mi - o - thi ef' i -



- μάς, εν ε-πι - γνώ-σει υ - μνούν - τάς σε. Ἦλ - θες, ε-  
- mas, en e - pi - ghno - si i - mnoun - das se. Il - thes, e -



- φά - νης το φως το α - πρό-σι-τον.  
- fa - nis to fos to a - pro - si - ton.

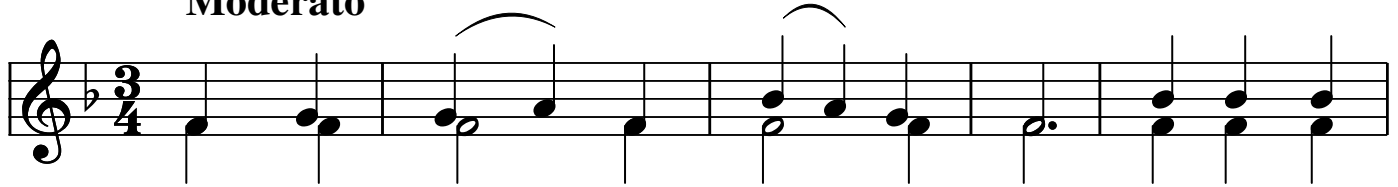
**KONTAKION OF THEOPHANY (EPIPHANY)  
YOU HAVE SHOWN YOURSELF TODAY**

January 6 to 14

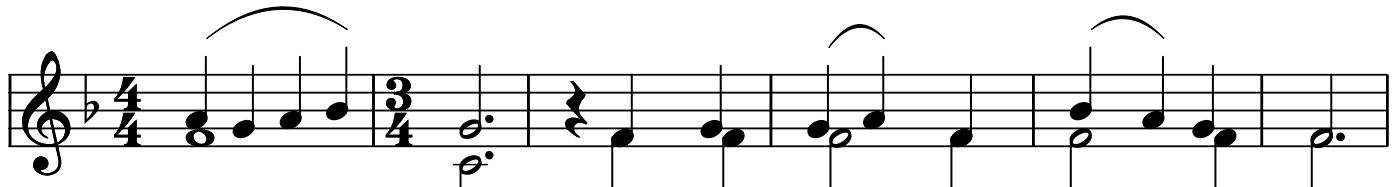
Fourth Tone (after Third Tone)

N. Takis

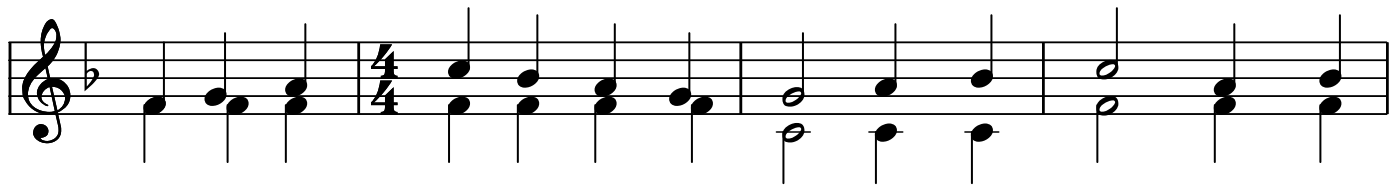
**Moderato**



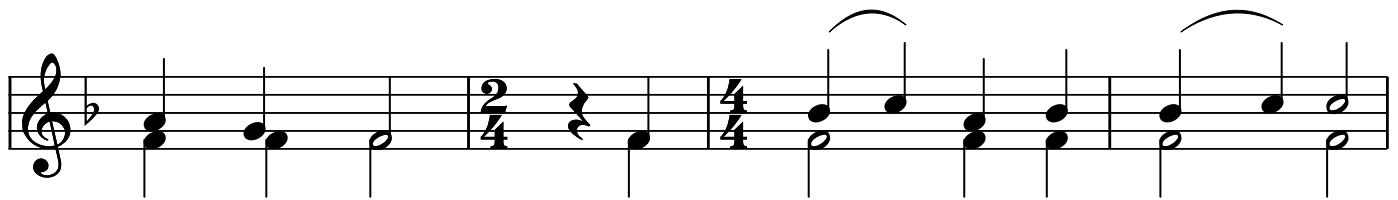
You have shown your - self to - day to all Cre-



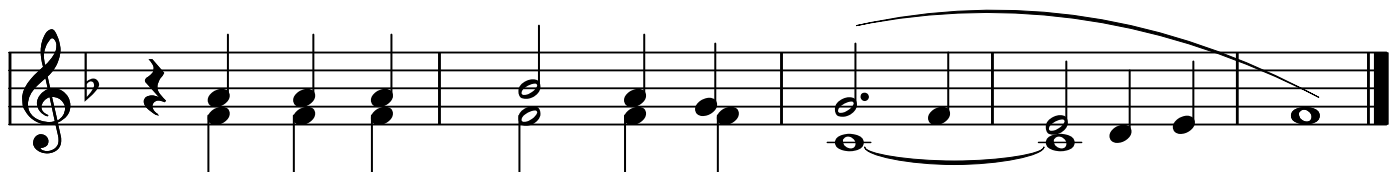
- a - tion, and your light shines forth, O Lord,



on us who, re-cog-niz-ing you, now with know-ledge, sing



out your praise: You came and ap - peared as



the un - ap - proch - a - ble Light!